

### Cryogenic-Gate Valves, 725 P.S.I.

Stainless steel body and topwork,  
one way tightening (in flow direction),  
“live loaded” gland packing  
“ cleaned and degreased for oxygen service ”

#### Part No. 09340.X.002\*

\*Butt weld connection for stainless steel pipes acc. to DIN EN ISO 1127 or ASTM A312

#### Part No. 09340.X.0024

Socket weld connection for stainless steel pipes acc. to DIN EN ISO 1127 and ASTM A312

#### Available options - on request only:

· other connections are in preparation

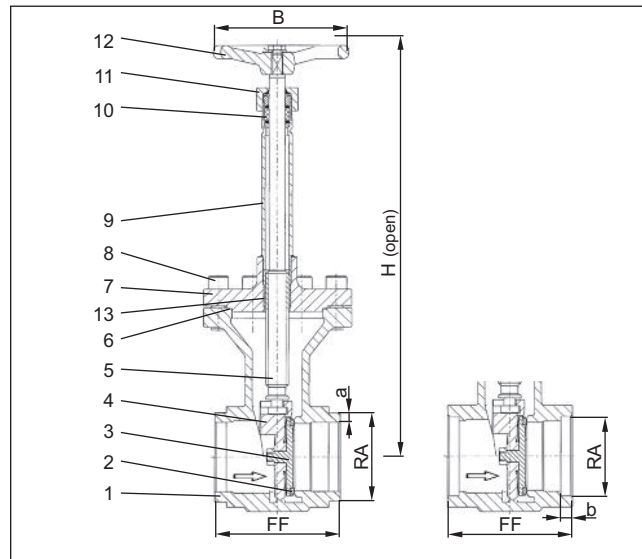


GTVSS Series

### Applications:

Approved for air gases, vapours and cryogenic liquefied gases incl. LNG.  
Working temperature: -196°C / -321°F (77K) up to +120°C / +248°F (393K)

| Materials         | ASTM                       |
|-------------------|----------------------------|
| 1 Body            | A 351 CF8                  |
| 2 Valve seal      | PTFE / Carbon filled (25%) |
| 3 Disc            | B 103 UNS C51900           |
| 4 Wedge           | A 351 CF8                  |
| 5 Stem            | A 276 Grade 304            |
| 6 Bonnet gasket   | PTFE                       |
| 7 Headpiece       | A 351 CF8                  |
| 8 Bolts           | A 194 B8                   |
| 9 Elongation tube | 213 TP 321                 |
| 10 Gland packing  | Graphite / PTFE            |
| 11 Gland nut      | A 276 Grade 303            |
| 12 Handwheel      | Aluminium alloy            |
| 13 Bush           | B 103 UNS C51900           |



Standard marking acc. to Pressure Equipment Directive 97/23/EG (PED).



Marking acc. to Directive 99/36/EG (TPED) will only be carried out by written notice on purchase order.



| Type 09340                    | Technical data |        |       |       |       |       |    |
|-------------------------------|----------------|--------|-------|-------|-------|-------|----|
|                               | Nominal size   | Inches | 1"    | 1½"   | 2"    | 2½"   | 3" |
| Dimensions code               | .X.            | –      | 4048  | 5060  | 657x  | 8088  |    |
| Face-to-face dimension        | FF             | –      | 133   | 110   | 110   | 110   |    |
| Height                        | H              | –      | 360   | 410   | 440   | 450   |    |
| Outside pipe -ø ASTM A312     | RA             | –      | 48.26 | 60.33 | 73.03 | 88.90 |    |
| Wall thickness pipe ASTM A312 | a              | –      | S10   | S10   | S10   | S10   |    |
| Socket depth                  | b              | –      | 13    | 16    | 16    | 16    |    |
| Handwheel-ø                   | B              | –      | 125   | 150   | 150   | 150   |    |
| Weight                        | LBS.           | –      | 10.56 | 16.5  | 18.92 | 25.08 |    |
| CV-Value                      | gal/min        | –      | 111   | 149   | 337   | 369   |    |

Dimensions in mm